

Test 2

SECTION 1 Questions 1–10

Choose the correct letter, A–C.

Whose idea was it to hold the party?

- A. Fred's B. A few close friends C. Mary's

Example: A

Question 1

Choose the correct letter, A–C.

How much time do Mary and Fred have to prepare everything for the party?

- A. About four hours
B. Two hours
C. About three hours

Questions 2 and 3

Answer the questions. Write NO MORE THAN THREE WORDS for each answer.

2. Where did Fred leave the list of things to do? _____
3. What time did Jim say he would arrive at Fred's house? _____

Question 4

Choose the correct letter, A–C.

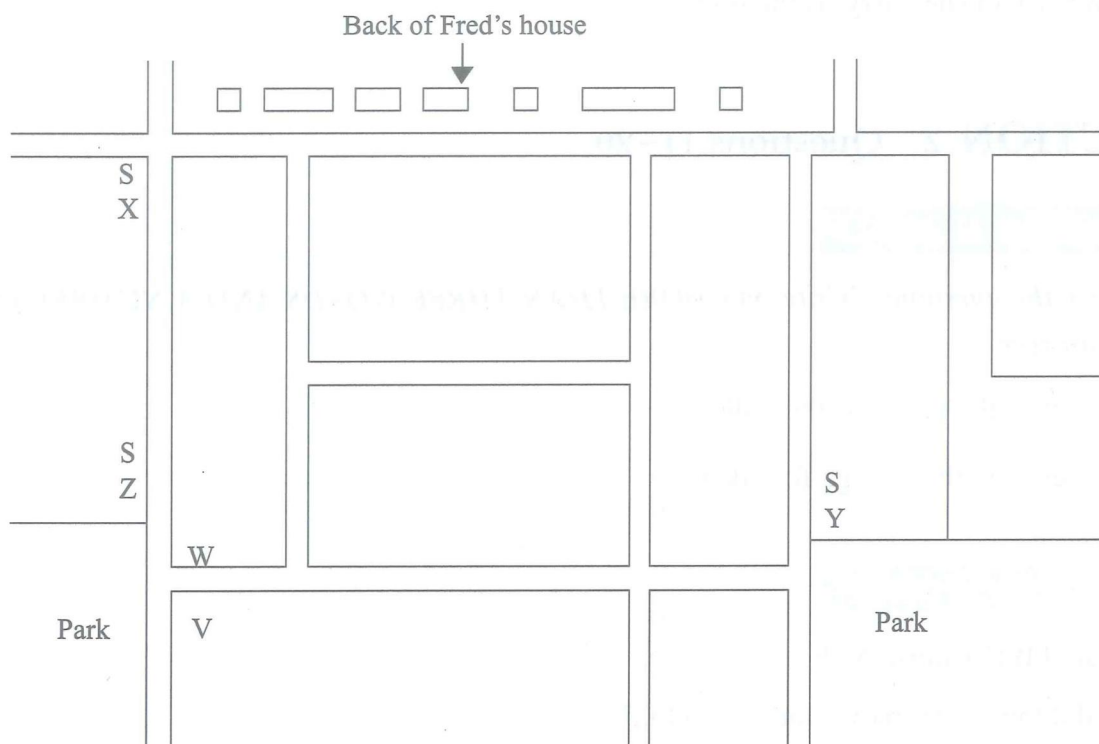
How much wine will Mary buy?

- A. 15 bottles of red and 15 white
B. 15 white and 35 red
C. 25 red and 15 white

Question 5

On the map below, choose the letter representing the liquor store.

Note: S means 'supermarket'.

**Question 6**

Answer the question. Write **NO MORE THAN THREE WORDS**.

Where are the glasses that Sally borrowed? _____

Questions 7 and 8

Choose **TWO** letters, A–E.

The meats for the barbecue are flavoured with _____.

- A. salt
- B. chili
- C. garlic
- D. pepper
- E. honey

Questions 9 and 10

Answer the questions. Write **NO MORE THAN TWO WORDS** for each answer.

9. Apart from French bread, what is another thing that Mary will buy? _____
10. What will she carry it/them in? _____

SECTION 2 Questions 11–20

Questions 11 and 12

Answer the questions. Write **NO MORE THAN THREE WORDS AND A NUMBER** for each answer.

11. What is the name of the college? _____
12. When was the college founded? _____

Questions 13 and 14

Choose **TWO** letters, A–E.

Why did the school move out of London?

- A. The surroundings had become unpleasant.
- B. It was given some cheap land in east England.
- C. An English millionaire gave the school 65 million pounds.
- D. The Second World War started.
- E. Sir Gifford Reade gave the school a big sum of money to move.

Question 15

Answer the following question. Write **A NUMBER**.

What year did the school open in east England? _____

Question 16

Choose the correct letter, A–C.

In 1858, the school had _____.

- A. just female students
- B. just male students
- C. both male and female students

Questions 17–19

Complete the following sentences. Write **NO MORE THAN THREE WORDS** for each answer.

In fact, the school is very famous for its 17. _____. The 18. _____ used to say, 'A 19. _____ in a healthy body'.

Question 20

Choose the correct letter, A–C.

What team sports does Mr Thomas say are played at the school?

- A. Rugby, soccer, and American football
- B. Basketball and water polo
- C. Soccer and cricket

SECTION 3 Questions 21–30**Question 21**

Choose the correct letter, A–C.

- A. John and Ann have both finished writing their survey reports.
- B. John has finished and Ann has nearly finished.
- C. Both of them have nearly finished.

Questions 22 and 23

Complete the following sentences. Write **ONE WORD OR A NUMBER** for each answer.

22. The X axis of John's graph is the _____ variable.

23. John divided his survey population into _____ groups.

Question 24

Choose the correct letter, A–C.

The relationship between time spent watching TV and reading ability is _____.

- A. the same for teenagers as it is for people in their fifties
- B. almost the same for people in their forties as it is for those in their fifties
- C. very different between teenagers and people in their twenties

Questions 25 and 26

Choose the correct answers.

John's survey shows that

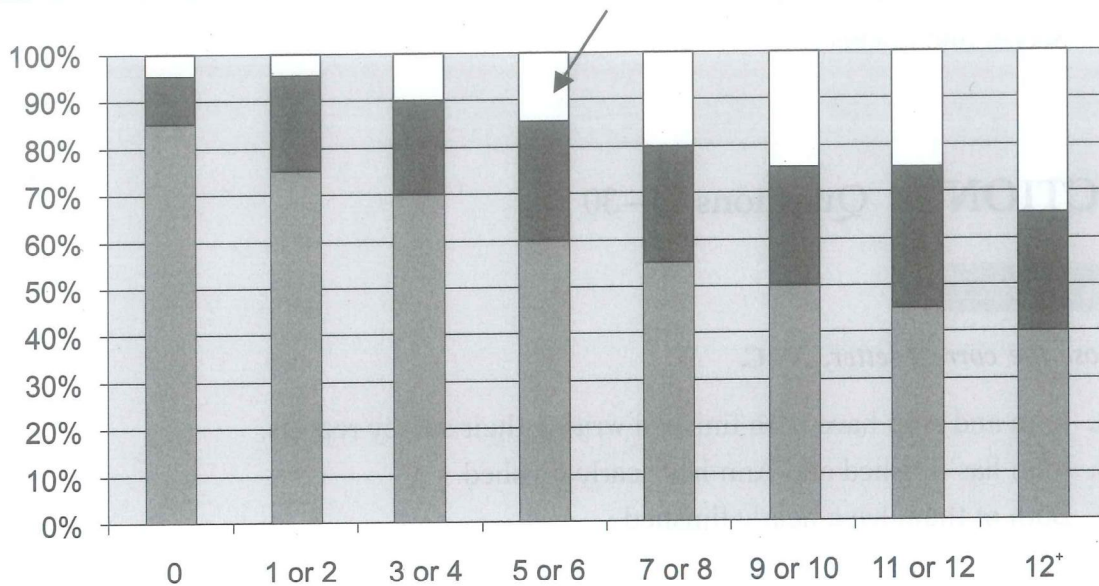
25. people now in their fifties read as much as they used to.

True False Not Given

26. forty- and fifty-year-olds watch television more than they used to and their reading levels have not declined.

True False Not Given

Questions 27–30



Complete the following sentences. Write **NO MORE THAN TWO WORDS** for each answer.

27. On the above chart, the arrow points to a percentage of _____ people.

28. The Y (horizontal) axis is the usual number of _____ meals per _____.

29. Ann asked people about their eating, weight, and _____.

30. Richard weighs 260 kilograms, short, fat, and _____.

SECTION 4 Questions 31–40

Question 31

Choose **ONE** letter, A–C.

What types of corporate crime will the course cover?

- A. All white-collar crime
- B. Cases of CEOs bribing government officials without telling their colleagues
- C. Cases involving corporate culture

Questions 32–36

Write **NO MORE THAN TWO WORDS** for each answer.

The course will try to identify what corporate criminals share in terms of 32. _____ and 33. _____. An interesting part of corporate crime is the 34. _____ of detection, trial, and punishment. Before it is detected by the 35. _____, it often seems that it goes on for an unreasonable length of time. There is also a 36. _____ that people found guilty of corporate crimes are treated more leniently by the courts.

Question 37

Choose the correct letter, A–C.

In 1980, the Ford Motor Company was put on trial for _____.

- A. reckless homicide
- B. tax evasion
- C. corporate greed

Questions 38–40

Complete the following sentences. Write **NO MORE THAN THREE WORDS** for each answer.

- 38. Companies sometimes exaggerate their profits to increase _____.
- 39. The *Wall Street Journal* ran an article saying Enron might have been President Bush's _____.
- 40. The Bush administration's _____ might have been designed to help Enron.